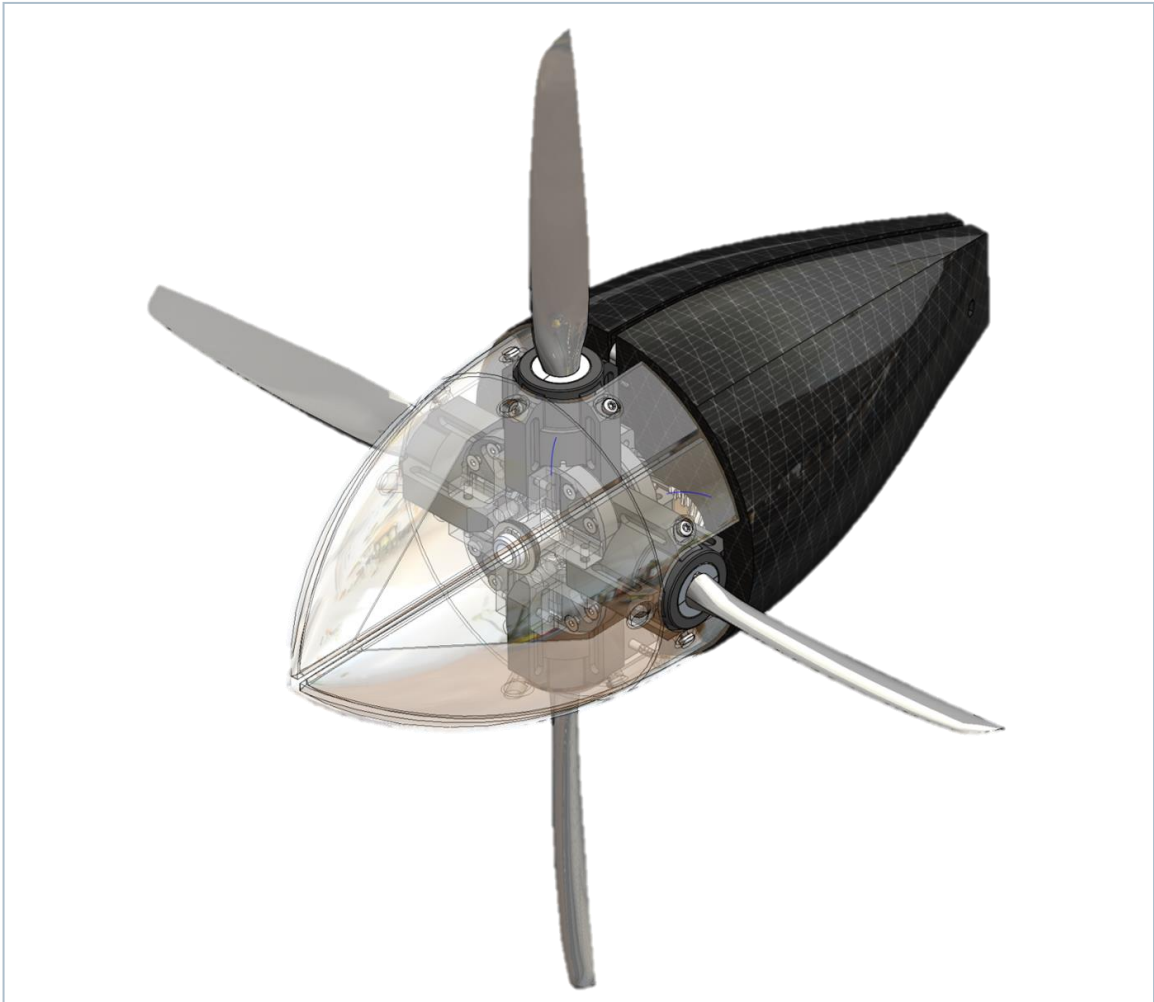


HEKA Aero

Developing disruptive propulsion with Simcenter



HEKA Aero uses Design Manager in Simcenter STAR-CCM+ to find optimum duct design for Go Fly competition

8%
Increase in thrust for same disk area

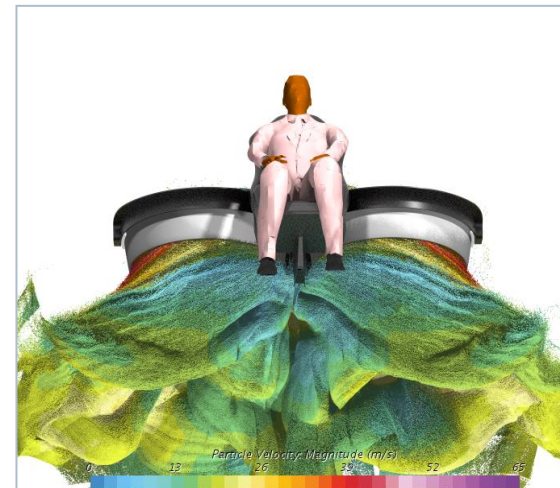


HEKA Aero

Developing disruptive propulsion with Simcenter



HEKA Aero uses Design Manager in Simcenter STAR-CCM+ to find optimum duct design for Go Fly competition



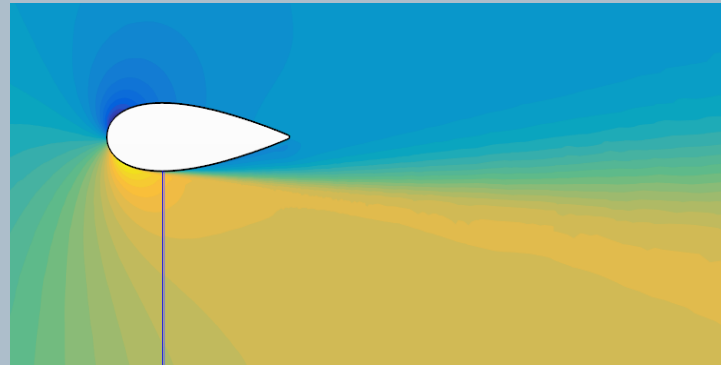
HEKA Aero

Developing disruptive propulsion with Simcenter

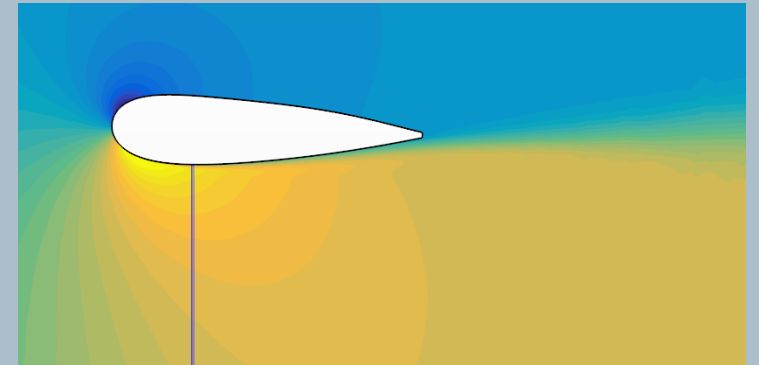


- Delivered 8% more thrust for same disk area
- Analyzed 250 different designs in under 5 hours
- Automated process allowed intensive design exploration to optimize duct design

Solving aerodynamic and propulsion challenges for Go Fly competition



Baseline design



Best design

- Analyzed 250 duct designs
- Best design improved leading edge suction, attached flow and longer, thicker chord

“With all the parameters we gave, Design Manager in Simcenter STAR-CCM+ gave us a duct design that offered 8% more thrust out of the same disk area. Siemens reaching out to startups like us is what fellowship really means”

Ricardo Romeu, VP of Engineering